



Alarm Clock Radio with Docking Station for iPod



MODEL: NI-3103



INSTRUCTION MANUAL Operating Instructions



**BEFORE OPERATING THIS PRODUCT, READ, UNDERSTAND,
AND FOLLOW THESE INSTRUCTIONS.**
Be sure to save this booklet for future reference.

 <p>The Lightning flash with arrowhead symbol, with an equilateral triangle is intended to alert the user of the presence of uninsulated dangerous voltage within the product's enclosure that may be of sufficient magnitude to constitute a risk of electric shock to persons.</p>	<div style="border: 1px solid black; padding: 5px; text-align: center;"> <p>CAUTION</p> <p>RISK OF ELECTRIC SHOCK DO NOT OPEN</p> </div> <p>CAUTION: TO REDUCE THE RISK OF ELECTRIC SHOCK, DO NOT REMOVE COVER (OR BACK). NO USER SERVICEABLE PARTS INSIDE. REFER SERVICING TO QUALIFIED SERVICE PERSONNEL.</p>	 <p>The exclamation point within an equilateral triangle is intended to alert the user of the presence of important operating and maintenance (servicing) instructions in the literature accompanying the appliance.</p>
---	---	--

CAUTION : TO PREVENT ELECTRIC SHOCK, MATCH WIDE BLADE OF PLUG TO WIDE SLOT, FULLY INSERT.

WARNING : TO REDUCE THE RISK OF FIRE OR ELECTRIC SHOCK, DO NOT EXPOSE THE APPLIANCE TO RAIN OR MOISTURE.

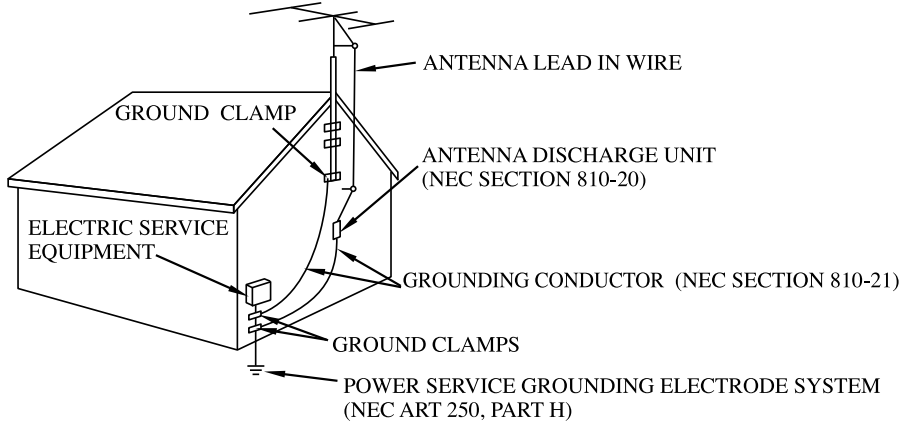
SAFETY INSTRUCTIONS

THESE IMPORTANT SAFETY INSTRUCTIONS ARE INCLUDED,
AS APPLICABLE TO THE APPLIANCE, CONVEYING TO THE
USER THE INFORMATION ITEMIZED BELOW

1. **Read instructions**-All the safety and operating instructions should be read before the appliance is operated.
2. **Retain instructions**-The safety and operating instructions should be retained for future reference.
3. **Heed Warnings**-All warnings and cautions on the appliance and in the operating instructions should be adhered to.
4. **Follow instructions**-All operating and use instructions should be followed.
5. **Water and Moisture**-The appliance should not be used near water, (e.g. a bathtub, washbowl, kitchen sink, laundry tub, wet basement, a swimming pool or lake.)
6. **Wall or Ceiling Mounting**-The appliance should not be mounted on a wall or ceiling.
7. **Ventilation**-The appliance should be situated so that its location or position does not interfere with its proper ventilation. For example, the appliance should not be situated on a bed, sofa, rug or similar surface that may block the ventilation openings, or placed in a built-in installation, such as a bookcase or cabinet, that may impede the flow of air through the ventilation openings.
8. **Heat**-The appliance should be situated away from heat sources such as radiators, heat registers, stoves, and other appliances (including amplifiers) that produce heat.
9. **Power Sources**-The product should be operated only with the type of power supply indicated on the marking label. If you are not sure of the type of power supply to your home, consult the product dealer or local power company. For products intended to operate from battery power, or other sources, refer to the operating instructions.

10. **Grounding Polarization**-This product may be equipped with a polarized alternating current line plug (a plug having one blade wider than the other). This plug will fit into the power outlet only one way period. This is a safety feature. If you are unable to insert the plug fully into the outlet, try reversing the plug. If the plug should still fail to fit, contact an electrician to replace the outlet. Do not defeat the safety purpose of the polarized plug.
11. **Power-Cord Protection**-Power supply cords should be routed so that they are not likely to be walked on or pinched by items placed upon or against them, paying particular attention to cords at plugs, convenience receptacles, and the point where they exit from the appliance.
12. **Cleaning**-The appliance should be cleaned with a soft, dry cloth. Unplug this product from the wall outlet before cleaning. Do not use liquid cleaners or aerosol cleaners. Use a damp cloth for cleaning.
13. **Non-use periods**-The power cord of the appliance should be unplugged from the outlet when left unused for a long period of time.
14. **Object and Liquid Entry**-Never push objects of any kind into this product through openings as they may touch dangerous voltage points or shorts-out parts that could result in a fire or electric shock. Never split liquid of any kind on the product.
15. **Damage Requiring Service**-Unplug this product from the wall outlet and refer servicing to qualified service personnel under the following conditions:
 - a) When the power-supply cord or plug is damaged,
 - b) If liquid has been spilled, or objects have fallen into the product,
 - c) If the product has been exposed to rain or water,
 - d) If the product does not operate normally by following the operating instructions. Adjust only those controls that are covered by the operating instructions as an improper adjustment of other controls may result in damage and will often require extensive work by a qualified technician to restore the product to its normal operation,
 - e) If the product has been dropped or damaged in any way, and
 - f) When the product exhibits a distinct change in performance —this indicates a need for service.
16. **Servicing**-Do not attempt to service this product yourself as opening or removing covers may expose you dangerous voltage or other hazards. Refer all servicing to qualified service personnel.
17. **Power Lines**-An outside antenna system should not be located in the vicinity of overhead power lines, or other electric light or power circuits, or where it can fall into such power lines or circuits. When installing an outside antenna system, extreme care should be taken to keep from touching power lines or circuits as contact with them might be fatal.
18. **Outdoor Antenna Grounding**-If an outside antenna or cable system is connected to the product, be sure the antenna or cable system is grounded so as to provide some protection against voltage surges and built-up static charges. Article 810 of the National Electrical Code, ANSI/NFPA 70, provides information with regard to proper grounding of the mast and supporting structure, grounding of the lead-in wire to an antenna discharge unit, size of grounding conductors, location of antenna-discharge unit, connection to grounding electrodes, and requirements for the grounding electrode. See Figure
19. **LIGHTNING**-For added protection for this product during a lightning storm, or when it is left unattended and unused for long periods of time, unplug it from the wall outlet and disconnect the antenna or cable system. This will prevent damage to the product due to lightning and power-line surges.
20. **SAFETY CHECK**-Upon completion of any service or repairs to this product, ask the service technician to perform safety checks to determine that the product is in proper operating condition.
21. **OVERLOADING**-Do not overload wall outlets, extension cords or integral convenience receptacles as this can result in a risk of fire or electric shock.

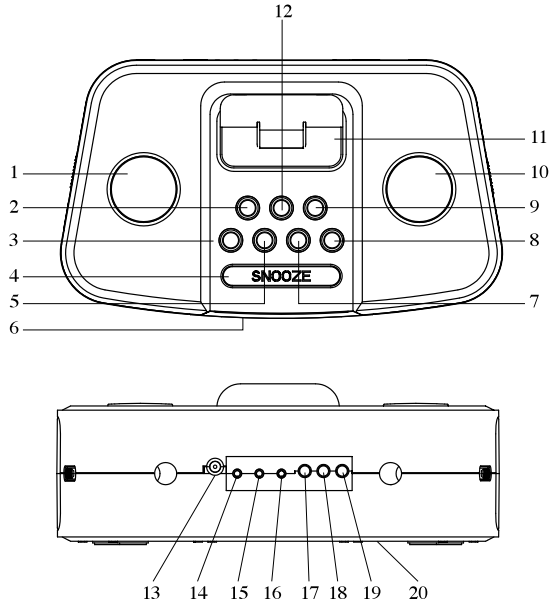
Example of antenna grounding as per National Electrical Code, ANSI/NFPA 70



NEC – NATIONAL ELECTRICAL CODE

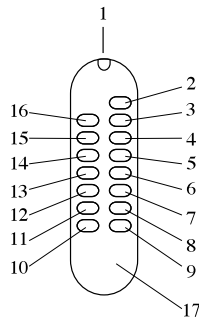
LOCATION OF CONTROLS

1. VOLUME CONTROL
2. PRESET – BUTTON
3. IPOD PLAY BUTTON
4. SNOOZE BUTTON
5. SLEEP SETTING BUTTON
6. LCD DISPLAY
7. FUNCTION BUTTON
8. POWER BUTTON
9. BAND BUTTON
10. SEARCH CONTROL
11. IPOD CONNECTOR
12. PRESET + BUTTON
13. DC IN JACK
14. EARPHONE JACK
15. AUX OUT JACK
16. AUX IN JACK
17. ALARM SETTING BUTTON
18. TIME/ MEM BUTTON
19. EQ BUTTON
20. BATTERY COMPARTMENT



REMOTE CONTROL

1. EMITTER LED
2. POWER BUTTON
3. IPOD PLAY BUTTON
4. FUNCTION BUTTON
5. ALARM SETTING BUTTON
6. SEARCH + BUTTON
7. VOLUME + BUTTON
8. PRESET + BUTTON
9. EQ BUTTON
10. TIME SET BUTTON / MEMORY BUTTON
11. PRESET – BUTTON
12. VOLUME – BUTTON
13. SEARCH – BUTTON
14. SNOOZE BUTTON
15. SLEEP SETTING BUTTON
16. BAND SELECTION BUTTON
17. BATTERY COMPARTMENT



Insert two “AAA”/1.5V batteries following the polarity as indicated in the compartment to the right. Alkaline batteries are recommended for long using time.

Note: when planning not to use the remote control for a long time. Remove the batteries in order to avoid the electrolyte leakage.

UNIT POWER SUPPLY (12V AC adaptor)

The iPod Clock Radio is powered by DC12V.

DC SUPPLY: Connect a direct current 12 Volt power adapter to the DC INPUT JACK located at the back of the iPod Clock Radio.

BATTERY SAFETY PRECAUTIONS:

- Keep batteries away from children and pets.
- Insert the battery observing the proper polarity (+/-). Failure to properly align the battery polarity can cause personal injury and/or property damage.
- Remove weak or discharged batteries from the product. Remove the battery when the product will not be used for extended periods of time to prevent damage due to rusted or corroded batteries
- Never throw batteries into a fire, Do not expose batteries to fire or other heat sources
- Battery Disposal: weak or discharged batteries must be properly disposed of and recycled in compliance with all applicable laws. For detailed information, contact your local country solid waste authority.
- Follow the battery manufacturer's safety, usage, and disposal instructions.

BATTERY BACKUP:

Three 1.5V "AA" batteries (not included) may be installed as a backup option to maintain the time if electrical power fails. In the event of a power outage, the time will not appear on the clock LCD Display, however the clock will continue to operate and the actual time will be maintained. The Clock LCD Display and other functions will resume once electrical power is restored if using the backup battery. The backup battery should be replaced as needed; Remove the battery if the clock is not used or stored for long periods of time.

HEADPHONE JACK

This iPod Clock Radio will accept stereo headphones with a Ø 3.5mm plug. Before connecting the headphones set the volume to minimum level as not to damage your ears or the headphones. Connect the headphones to the headphones jack. The speakers will be automatically disconnected.

Warning: Prolonged exposure to high sound levels may permanently damage your hearing. You may not hear some warning sound while wearing these headphones.

VOLUME CONTROL

Press and hold the VOL + or VOL – Button to the desired volume level.

**RADIO OPERATION****RADIO RECEPTION**

1. Press Power Button to turn on the iPod Clock Radio.
2. Press Function Button select to radio.
3. Select AM/FM band by pressing the Band Button. AM and FM are alternately selected each time when the Band Button is pressed.
4. Radio Tuning
5. Press and hold the "Search +" or "Search –" Button until the display frequency starts run.

6. When a station of sufficient strength has been found. Tuning will stop or you can stop the automatic tuning by pressing “Search +” or “Search –” Button again.
7. Repeat until you have found the desired station.
8. Adjust the volume to the desired level by pressing VOL+ or VOL– button.

Note:

- For better reception, FM wire antenna shall be fully untied and adjusted well.
- This iPod Clock Radio has a built-in antenna for AM, Locate the iPod Clock Radio where you can obtain the best reception.
- The “ST” icon will appear on the LCD display, when receiving station is broadcasted in Stereo.

PRESET TUNING

1. Select the AM/FM band and tune to your desired station according to the normal tuning procedure.
2. Press the TIME/MEM button at the rear cabinet, “CH1 M” will appear and “M” is flashing in the LCD, Then use “Search +” or “Search –” button to change the number where the station will be stored. (CH.1 to CH.9)
3. Store the current frequency by pressing TIME/MEM button again when you get the desired number.
4. Repeat the same procedure to set other desired frequencies into Memory CH.1 to CH. 9

Remarks: A stored frequency can only be erased by storing another frequency in its place. The iPod Clock Radio can be preset up to 9 stations.

MEMORY RECALL

Recall the stored frequencies by pressing Preset + or Preset – Button to select 1 to 9 station as desired

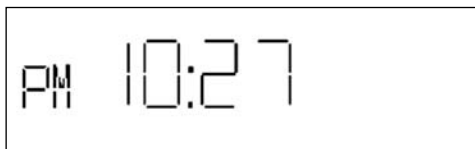
NOTE: As stored frequencies can only be stored for long time with the power supplying, The station you stored will be lost and can not be recalled in case that you cut off the AC power

Note: While in the Radio Mode, the display will indicate as Frequency. It cannot be set the time while the radio was in using. To see time, please power off the iPod Clock Radio.



CLOCK SETTING

When the iPod Clock Radio is at power off mode.



- a. Press TIME/MEM Button, enter to hour adjustment mode



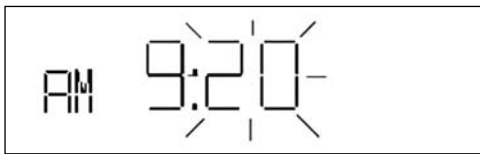
b. Press Search + or Search - Button to desired HOUR. (e.g. 10:27 pm -> 9:27 am)



c. Press TIME/MEM Button, enter to minute adjustment mode.



d. Press Search + or Search - Button to desired MINUTE. (e.g. 9:27am -> 9:20am)



e. Press TIME/MEM button, finish clock adjustment.



NOTE:

For 12 Hour display, if the time is am, then AM icon will appear. If the time is pm, then PM icon will appear.

Time setting is invalid if the time always flashes.

ALARM CLOCK SETTING

1. When the iPod Clock Radio is at power off mode.
2. Press the Alarm Button at the rear of the unit to choose the alarm mode (“Alarm to Buzzer”, “Alarm to Tuner” and “Alarm to iPod”).
3. Press and hold the Alarm Button the set the alarm time.
4. Hour time will flash, press the Search + or Search – Button to set the desired alarm hour.
5. Press Alarm Button to enter the minute adjustment mode.

6. Minute time will flash, press the Search + or Search – Button to set the desired alarm minute.
7. Press Alarm Button to finish alarm setting.

HOW TO TURN OFF THE ALARM

In “POWER OFF” mode, press Alarm Button until the “ALARM 1” sign disappear on the LCD display.

SNOOZE FUNCTION

When you are awakened but wish to sleep a few minutes more, simply touch the “SNOOZE” button and it will shut off the alarm sound for approximately 9 minutes before the alarm sounds again. This can be repeated several times.

SLEEP FUNCTION

Sleep time step changes for each Sleep Button pressing:

10-> 20-> 30-> 40-> 50-> 60-> 70-> 80-> 90

Sleep icon will appear on the LCD display when sleep function is on.

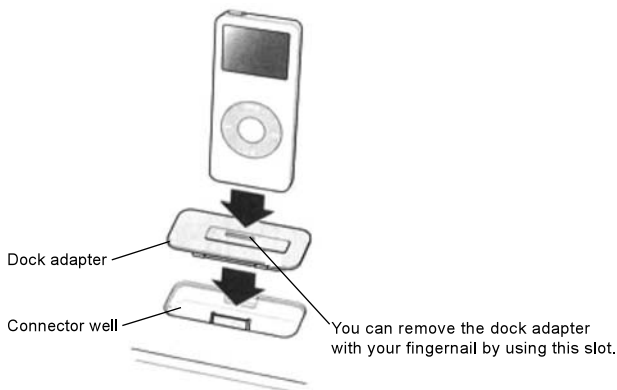
When count-down time reaches to zero, the system will automatically turn OFF.



OPERATING IPOD

You can set up and start listening to music on your iPod Clock Radio in a few easy steps.

1. Turn on the iPod Clock Radio.
2. Press Function Button to choose iPod mode.
3. Choose the dock adapter that fits your iPod. Your iPod fits snugly into the correct adapter.
Note: If you have an older iPod that doesn't have a dock connector on the bottom, you can use an audio cable to connect it to the audio input port (see the section of “AUX INPUT JACK”).
4. Insert the dock adapter into your iPod Clock Radio and connect your iPod.
5. Browse for a song on iPod, then press Play (▶ ||) and enjoy! Use the buttons on your iPod Clock Radio or on the included Remote Control to increase or decrease the volume.



To connect an iPod with a dock connector:

Insert the dock adapter that fits your iPod, then connect your iPod.

Your iPod Hi-Fi includes dock adapters that work with most models of iPod with dock connectors. If you want to connect a different iPod, you can easily remove the dock adapter from your iPod Clock Radio using a fingernail, insert the adapter that fits the other iPod, and then insert the other iPod.

Control your iPod at iPod Clock Radio

To	Do This
Play or pause a song	Press the iPod PLAY Button.
Change the volume	Press the Volume Up (+) or the Volume Down (-) button.
Skip to the next song	Press the Search + button.
Restart a song or play the previous song	Press the Search - button once to restart a song. Press it twice to play the previous song.
Fast-forward or rewind a song	Press and hold the Search + or Search - button.



EQUALIZER

1. Press EQ button to select the EQ sound effects (FLAT, POP, ROCK, JAZZ or CLASSIC)
2. It will be shown on the display if chosen ROCK, JAZZ, CLASSIC or POP.

AUX INPUT JACK

1. Press POWER button to turn on the iPod Clock Radio.
2. Connect the AUX connect wire from the out jack of your Personal Player such as portable MP3 player to the AUX input jack of the rear of the iPod clock radio at the rear.
3. Press the Function Button to select the AUX mode on the display.
4. Play Start from your Personal Player.



TIPS AND TROUBLESHOOTING

Most problems with your iPod Clock Radio can be solved quickly by following the advice in this chapter.

1. If your iPod Clock Radio won't play music or respond

- Make sure the volume isn't turned down all the way. If another audio device is connected, make sure the volume on that device isn't turned down all the way.
- Unplug your iPod Clock Radio, wait about five seconds, and plug it in again. Make sure the adaptor cord connectors on both ends of the power cord are pushed in all the way.

2. If your iPod won't respond

- Make sure the Hold switch is off and your iPod is not paused.
- Reset your iPod. Connect iPod to your iPod Clock Radio, set the Hold switch to Hold, and then turn it off again. Then press and hold the Center and Menu buttons for about six seconds, until the Apple logo appears.
- **Note:** If you have an original iPod with a dock connector (with four buttons below the display), press and hold the Play/Pause (▶ ||) and Menu buttons to reset it.
- If that doesn't work, see the documentation that came with your iPod for more information.

3. If the remote isn't working

- Make sure to point the remote directly at your iPod Clock Radio.
- Make sure the remote sensor on the front panel of your iPod Clock Radio is not blocked.
- Make sure you can play music through your iPod Clock Radio using the iPod controls. The problem may not be with the remote.
- The remote battery may need to be replaced.